



## BOX EXTENSION INSTRUCTIONS

Use these instructions to install box extensions. Read and follow these instructions along with the standard instructions carefully before installing or using tarp system.

**NOTICE TO INSTALLER:** Even if familiar with product, read instructions prior to installation as improvements may be made without notice. Always handle components with care. If you have questions or problems, call customer service. When done, these instructions must be given to the consumer.

**NOTICE TO CONSUMER:** Before using this product, read special instructions. Save these instructions for future reference.



Questions? 800-233-4655  
agricover.com

# PREPARATION

## TOOLS NEEDED

- 9/16" Wrench
- Ratchet with 9/16" socket and extension
- Drill with 3/8" bit
- 7/32" Allen wrench
- Tape measure
- Cutting tool
- Clamps
- Protective eyewear

**▲ CAUTION: Over tightening hardware may damage components.**

**NOTE:** For best adhesion, ensure air and surface temperatures are above 60° F.

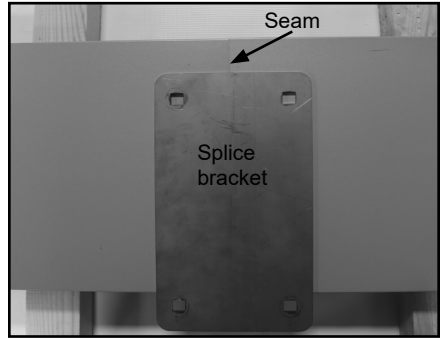
**NOTE:** Hardware appearance and components may vary.

**▲ CAUTION: To avoid galling of stainless steel hardware, use anti-galling spray, grease or lubricant on threads and avoid high speed when fastening. Do not use impact tools for stainless steel hardware.**

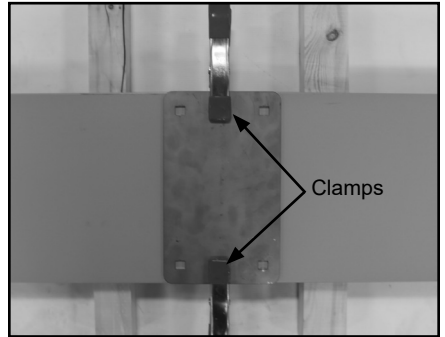
# 1: PREPARING EXTENSIONS

**NOTE:** If splice brackets are not required, proceed to Step 1E.

A. Align extensions on wood blocks and center splice bracket over seam.



B. Clamp splice bracket over extension seam.



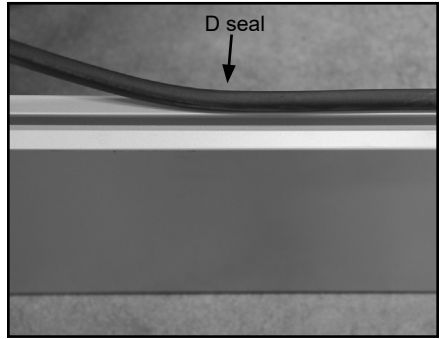
C. Using splice bracket as a guide, drill (1) 3/8" hole through extension. Insert carriage bolt through splice bracket and extension, add another splice bracket on back side of extension and secure using washer, lock washer and nut, leaving finger tight.

D. Drill remaining (3) holes and secure using carriage bolts, flat washers, lock washers and nuts, fully tighten all hardware.

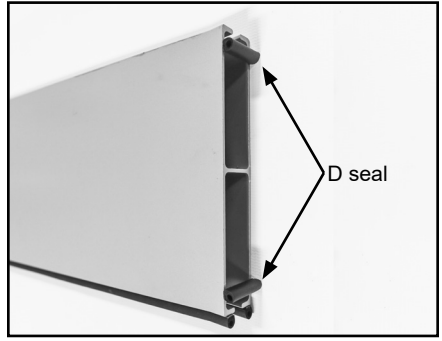


# 1: PREPARING EXTENSIONS (Continued)

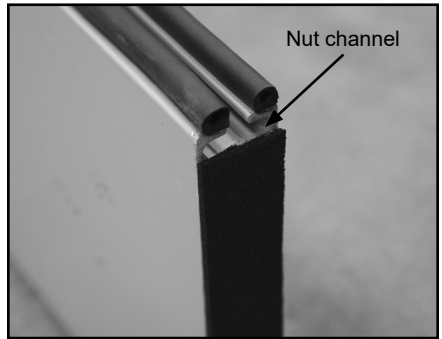
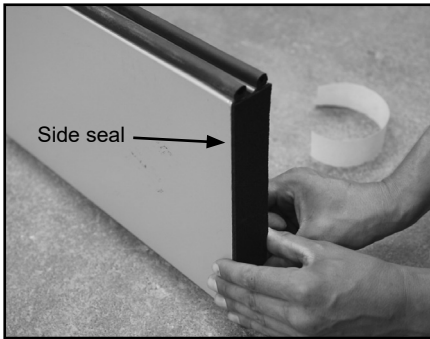
C. Apply D seal to both sides of nut channel on the bottom of all extensions.



D. Apply D seal to both ends of side extensions, allowing room to slide hardware into both nut channels.



E. Apply side seal to both ends of the front, rear and bin divider (if applicable) extensions. Trim side seals to open top and bottom nut channels.



# 1: PREPARING EXTENSIONS (Continued)

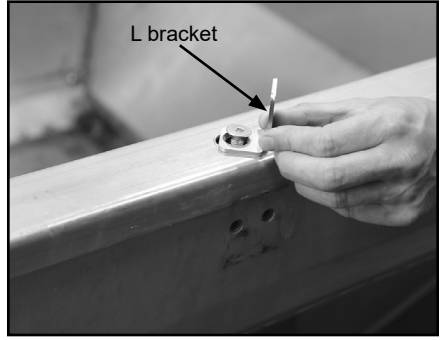
F. Insert hardware into bottom nut channel on all extensions to fit factory holes.

**NOTE:** If factory holes are not provided, drill 3/8" holes every two feet.

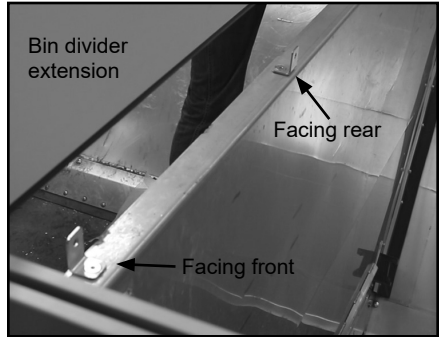


G. Bolt L brackets at all factory blind holes.

**NOTE:** If no factory blind holes are present or not installing bin divider, proceed to Step 2.

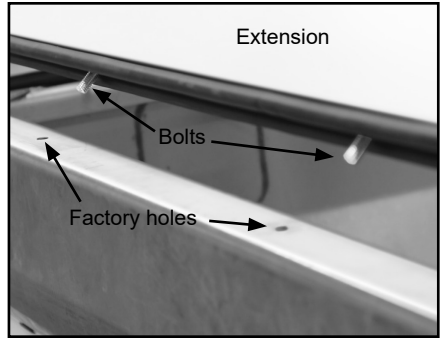


**IMPORTANT:** L brackets should alternate directions for bin divider extensions.



## 2: INSTALLING EXTENSIONS

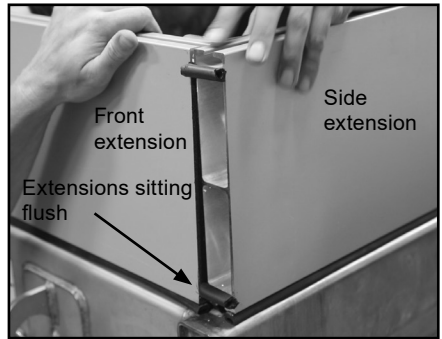
A. Align bolts in front extension with factory holes, then center extension on box. Secure with flat washers, lock washers and nuts, leaving finger tight.



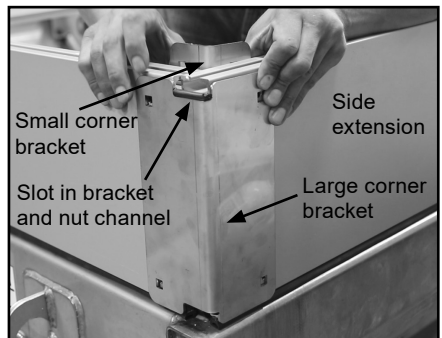
B. Insert hardware into top nut channel of front extension for end caps.



C. Align bolts on side extension with factory holes, then adjust side extension flush with outside edge of front extension. Secure with flat washers, lock washers and nuts, leaving finger tight.



D. Place large corner bracket on outside, ensuring corner bracket slots line up with nut channel on side extension, then place small corner bracket on the inside. Ensure corner brackets are flush with top of extensions and use clamp to hold in place.



E. Using corner brackets as a guide, drill (4) 3/8" holes through extension. Secure with carriage bolts, flat washers, lock washers and nuts, leaving finger tight.

F. Repeat Steps 2C-E for opposite side extension.

## 2: INSTALLING EXTENSIONS (Continued)

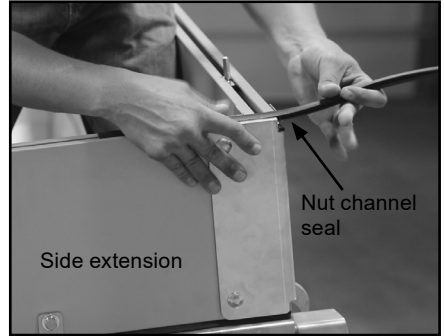
G. Insert hardware into top nut channel of rear extension for end caps. Align bolts in rear extension with factory holes. Secure with flat washers, lock washers and nuts, leaving finger tight.

H. Repeat Steps 2D-E to secure both rear corners.

**Tip:** Work from front of trailer to back to ease installation.

I. Note bow locations as needed, add weld nuts and nut channel seal into top channel of side extensions alternating so there is seal between each bow.

**NOTE:** Ensure nut channel seal covers full length of top channel of side extension.



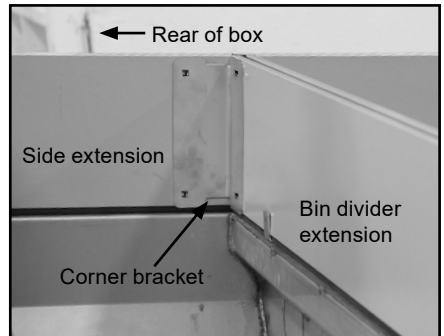
**NOTE:** If not installing bin divider extensions, proceed to Step 2N.

J. Insert hardware into top channel of bin divider extension. Using (2) people, place bin divider extension.



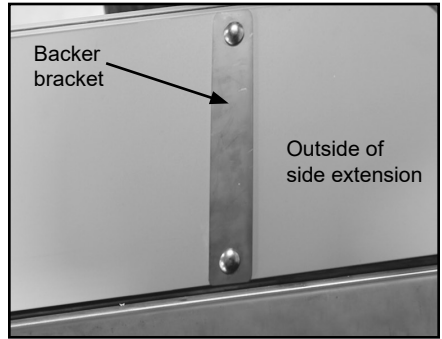
K. Place corner bracket on rear side of bin divider extension. Ensure corner bracket is flush with top of extensions and use clamp to hold in place.

L. Using corner bracket as a guide, drill 3/8" holes through extensions.

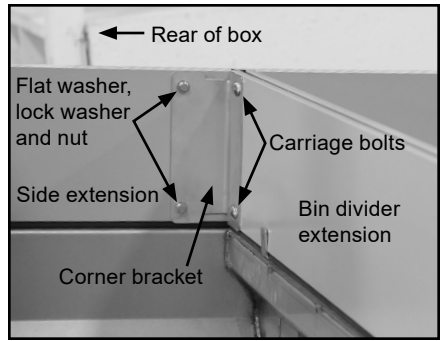


## 2: INSTALLING EXTENSIONS (Continued)

M. Insert carriage bolts into backer bracket. Align bolts with holes in side extension and corner bracket, secure with flat washers, lock washers and nuts, leaving finger tight.



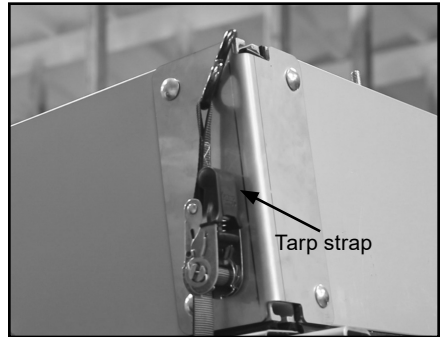
N. Insert carriage bolts through corner bracket and bin divider extension. Secure with flat washers, lock washers and nuts, leaving finger tight.



O. Repeat Steps 2K-N for opposite side and remaining bin divider extensions (if applicable).

P. Ensuring all extensions are level, start tightening all hardware.

**Tip:** If necessary, use tarp straps/clamps to help level extensions.



### For L bracket applications:

Q. Using L brackets as a guide, drill 3/8" hole at each location and secure with carriage bolts, washers, lock washers and nuts.

